



OFFICE OF PROCUREMENT

Jose C. Garcia, Director
Delene R. Sedillo, Deputy Director
Billy E. Autry, Associate Director
Bradley J. Niese, Associate Director
Tracy Quintanilla, Secretary (CBF)
Yvette Villarreal, Administrative Specialist (CBF)

BA

Office of Small Business Programs – Johnson Space Center

Robert Watts, Lead Specialist
 Monica Craft, Specialist
 Tumarrow Romain, Specialist

JSC Labor Relations Officer
 Jalisa Sims
 Diana Denardo

**Strategic Advisor
for Acquisition Matters**
 Michelle Isermann

Source Selection & Analysis Office

Lisa Phillips
Manager

Joy Barckholtz
Technical Deputy Manager

BD

Space Station Procurement Office

Eric Schell
Manager

Adrian Clayton
Deputy Manager

BG

Projects Procurement Office/WSTF

Steve Janney
Manager

Jessica Miller
Deputy Manager

Jesse Brennan
Deputy Manager

BH

Institutional Procurement Office

Kristi Fryer
Manager

John Trahan
Deputy Manager

Krystine Bui
Deputy Manager

BJ

Lunar & Planetary Exploration Procurement Office

Lauren Johnson
Manager

Jannette Bolden
Deputy Manager

A. Renee Falls
Deputy Manager

BL

Operations Support Office

Charles Bell
Manager

Shari Miller
Deputy Manager

Rob Kolb
Deputy Manager

BR

Exploration Systems Procurement Office

Jeremy Pierre
Manager

Julie Ellis
Deputy Manager

BT



Source Selection & Analysis Office



Lisa R. Phillips, Manager
Joy Barckholtz, Deputy Manager
Grace Batter Weiman (CBF), Secretary (B20) ¹

Source Selection and Pricing

Michael Lonchambon, Team Lead
John Moore, Price Analyst
Sophy Mo, Price Analyst
Jalisa Sims, Price Analyst
Tyrone Wright, Price Analyst
Jon Prihoda, Price Analyst

Systems, Policy, and FAC-C Training

Wendy Crisman, Team Lead
Audrey Montgomery, CO
Diana Denardo, CO

Closeout, Audits, and Reports

Carrie Mulholland, Team Lead
Sharan Jackman, CO

IT Support

LaDonna Brezik (MORI)

Synopsis, Data Entry, and Database Management

Brandon Bowden (SSC)
Robin Cunningham (SSC)
Maureen O'Connell (SSC)
Hida Horton (MORI)

NOTES:

¹ Shared with BJ



International Space Station Procurement Office (BG)



Eric Schell, Manager
Adrian Clayton, Deputy Manager
Lydia Pharr, Secretary (CBF)

BG2
10K, ESOC, REMIS

Chris Gaspard, Team Lead

Bryan Parson, CS
Margaret Robinson, LCO
David Wilson, CO
Doug York, CS
Vacant, CO
Vacant, KTR

BG3
HSFTIC, LEO Commercialization, OZ

Kelly Rubio, Team Lead

Karen Dailey, CO
Kathryn Taylor, KTR
E. David Udoh, CS

BG4
CRS, CASIS, OB

Jason Phillips, Team Lead

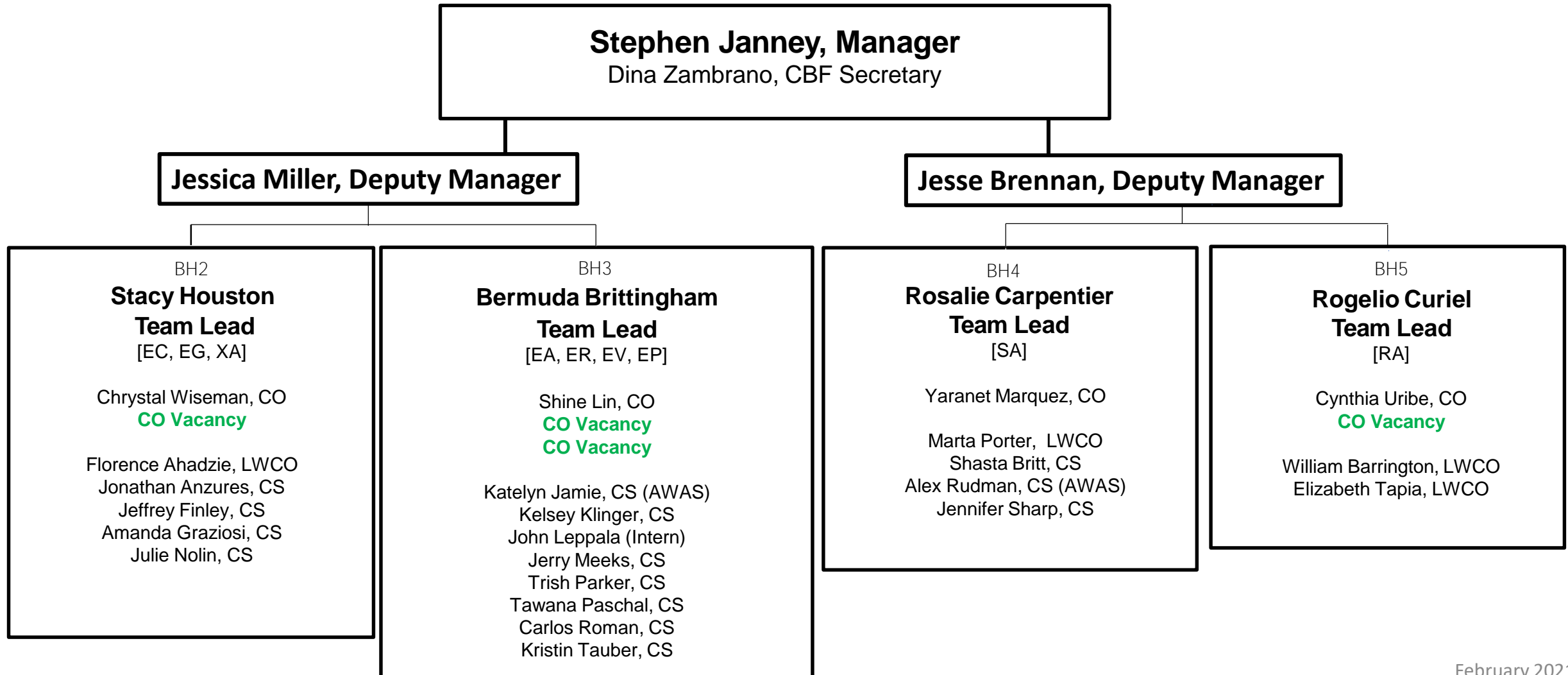
John Nunnally, CS
Dorann Schooley, KTR
Kendrea Vallien, CO
Myrtle White, KTR
Vacant, CO

BG5
International, RLLS, CMC

Lawrence Miller, Team Lead

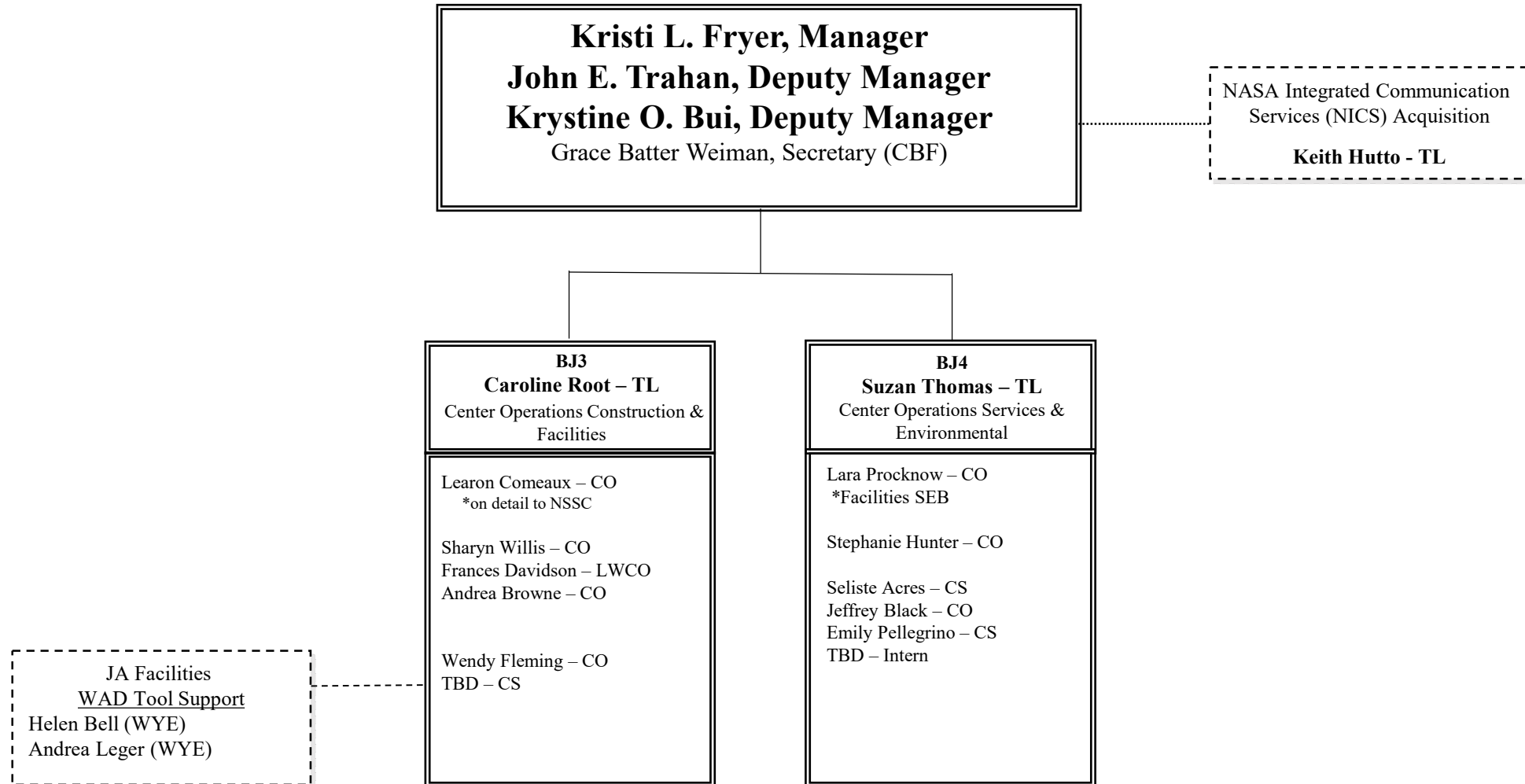
T. Brad Collins, KTR
LaToy Jones, CO
Portia Keyes, CO
Michael McIntosh, LCO
Ulcka Patel, LCO

BH/Projects Procurement Office





Institutional Procurement Office



NASA Office of Procurement Johnson Space Center



BL/Lunar & Planetary Exploration Procurement Office

Lauren N. Johnson, *Manager*

Jannette R. Bolden, *Deputy Manager* 

A. Renee Falls, *Deputy Manager* 

J.R. Carpentier, *Team Lead***

P. Lamar Mueller, *Team Lead**

Melissa M. Sims, *BLIBT Admin Support (CBF)*

MA/Gateway Program Office* HEO

HALO

Vacant, CO

Jennifer E. Escalante, LCO

Gateway Programmatic Support

Jennifer E. Escalante, LCO

Lunar Terrain Vehicle (LTV)** HEO

Pre Award

Dominic J. Golemi, CO

Vacant, CS*

xEVA Production & Services** Pre Award HEO

Vance Benton, LCO

xEMU*

HEO

Vacant, CO

Ryan C. Lyau, CS

Andrew L. Candee, CS (SS)

Helen Green, CS (SS)

Mark Smith, CS (SS)

xEMU Technical Support Liaison*

Kelisha L. Bell, (SS)

XA/Commercial Lunar Payload Services (CLPS)** SMD

Pre & Post Award

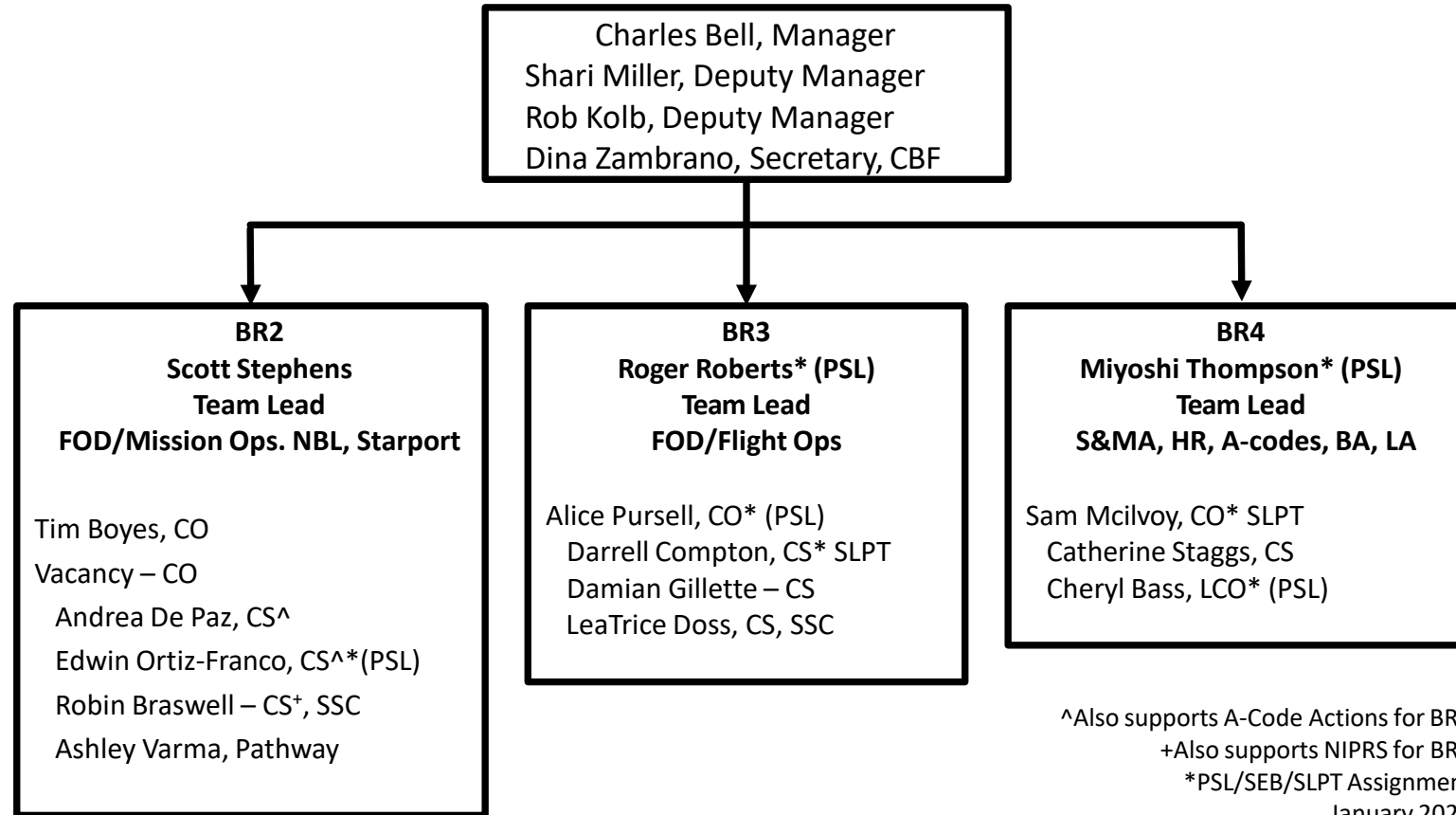
Aubrie Henspeter, CO

Jennifer K. Ariens, CS

Kevin Williams, Intern Spr. 2021



BR Operations Support Office





Exploration Systems Procurement Office/BT



Jeremy Pierre (*Manager*)
Julie Ellis (*Deputy Manager*)
Melissa Sims, CBF

MPCV & Engines Team

Aneesah Vaughn (*Team Lead*)
Ashley Chaves, OME SEB, CO
Amber Coyne, MPVC, LCO
Kenia Vasquez, MPCV, CS
Miguel Segovia, MPCV, CS

OPOC & LAMS Team

Christina Wells (*Team Lead*)
Mandy Kuehn, OPOC, CO
Brian Rosario, LAMS, CS
Vacant, CO/CS
Vacant, CO/CS